



Area teams take on state softball tournament

SPORTS, 1B

Dallas County News



THURSDAY, JULY 20, 2023 | ADELNEWS.COM

SINCE 1872 VOLUME 13 ISSUE 19 | \$1.00

RAGBRAI riders can sign a big rock in Rippey, feast on BBQ in Luther

Allison Ullmann and Ronna Faaborg
Ames Tribune | USA TODAY NETWORK

Snow piles will be nonexistent when RAGBRAI participants roll through Rippey on Day 3 of the 50th ride while Luther prepares to offer mounds of delectable BBQ and entertainment.

The rural towns are two pass-through sites along the 86.1-mile Tuesday, July 25 route. Riders will have a fairly flat trek of 15 miles from Jefferson before entering Rippey.

Rippey is known for an annual winter bike ride, held on the first Saturday of each February since 1978. Cyclists head out from Perry during the Bike Ride to Rippey, no matter the temp.

Conditions will be decidedly warmer when tens of thousands of RAGBRAI riders and support staff visit Rippey as

they leave Carroll and head toward the overnight town of Ames. Rippey is an official meeting town located between the Jefferson and Luther stops.

Riders will head into Rippey on Highway E57, turn south on 1st Street, continue on Main Street and 3rd Street and then head north back to Highway E57.

Mayor Dan Brubaker, who is also leading the Rippey RAGBRAI committee, said several streets will close on July 25. He'd planned for parking at Landus, but recent construction means several support vehicles will park on city streets.

"We're only four blocks wide so a lot of the streets are going to be closed for parking and things like that," Brubaker said.

See RIPPEY, Page 2A



Mike Lindsay and Kathy Murphy chat during a stop in Rippey on the RAGBRAI route inspection ride June 6. ZACH BOYDEN-HOLMES/THE REGISTER

Everything to know about RAGBRAI's 50th anniversary ride

Francesca Block
Des Moines Register | USA TODAY NETWORK

The Register's Annual Great Bicycle Ride Across Iowa will celebrate 50 years with what is expected to be record registration and quite a few nods to the history of the ride.

Here's everything you need to know about the week-long cycling extravaganza.

What is RAGBRAI?

It may be hyperbole, but Iowans like to boast that RAGBRAI is the world's largest annual mobile party. Each summer, cyclists set out from a point on or near the Missouri River in western Iowa and ride seven day-long routes to their destination on the Mississippi River. The route changes from year to year, so almost all of Iowa has participated at one point or another.

What does RAGBRAI stand for?

RAGBRAI stands for the Register's Annual Great Bicycle Ride Across Iowa.

How did RAGBRAI begin?

John Karras, a copy editor and features writer for the Des Moines Register, and Donald Kaul, the paper's Washington columnist, hatched the plan for a cross-state bicycle ride and invited their readers along. When they set out from Sioux City on Aug. 26, 1973, for the first day's ride to Storm Lake, a few hundred people joined them. They rode again in 1974 with a growing entourage, and in January 1975, Kaul announced in a short item in the Register that the ride had gained an official name for its planned third edition: the Register's Annual Great Bicycle Ride Across Iowa.

Today, RAGBRAI is its own organization within Gannett Co., the Register's owner. A dedicated year-round staff organizes the event, which typically draws tens of thousands of participants from across the nation and

See RAGBRAI, Page 3A

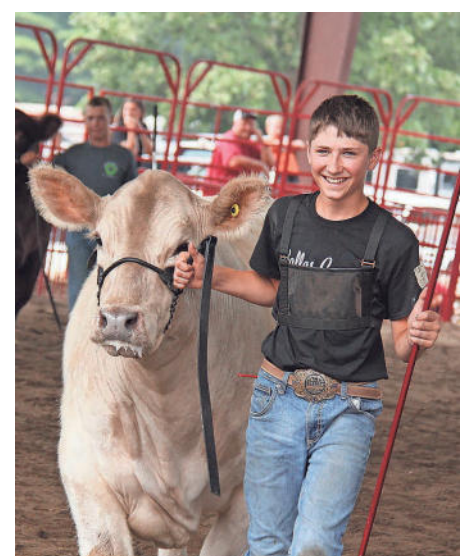
Fun at the fair



Zack Nichols, 4, of Adel, reacts while feeding the parakeets in the Pretty Birds exhibit at the Dallas County Fair on Thursday, July 13, 2023, in Adel. See 8A for more. PHOTOS BY ALLISON ULLMANN/DALLAS COUNTY NEWS



Audreigh Eivins, 9, of Adel, has fun in the Foam Zone at the Dallas County Fair on Friday, July 14, 2023, in Adel.



McCoy Luellen, with Minburn 4-H Club, walks out of the show ring during the beef show at the Dallas County Fair on Saturday, July 15, 2023, in Adel.



8 38885 00401 7